

USB Cradle Uninstall And Re-Install For Windows XP and Windows 2000

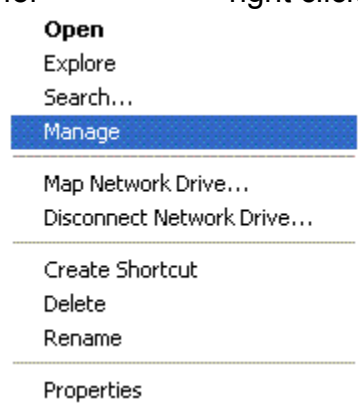
Note: Before you begin do NOT disconnect the cradle cables.


Remove USB Cradle Drivers

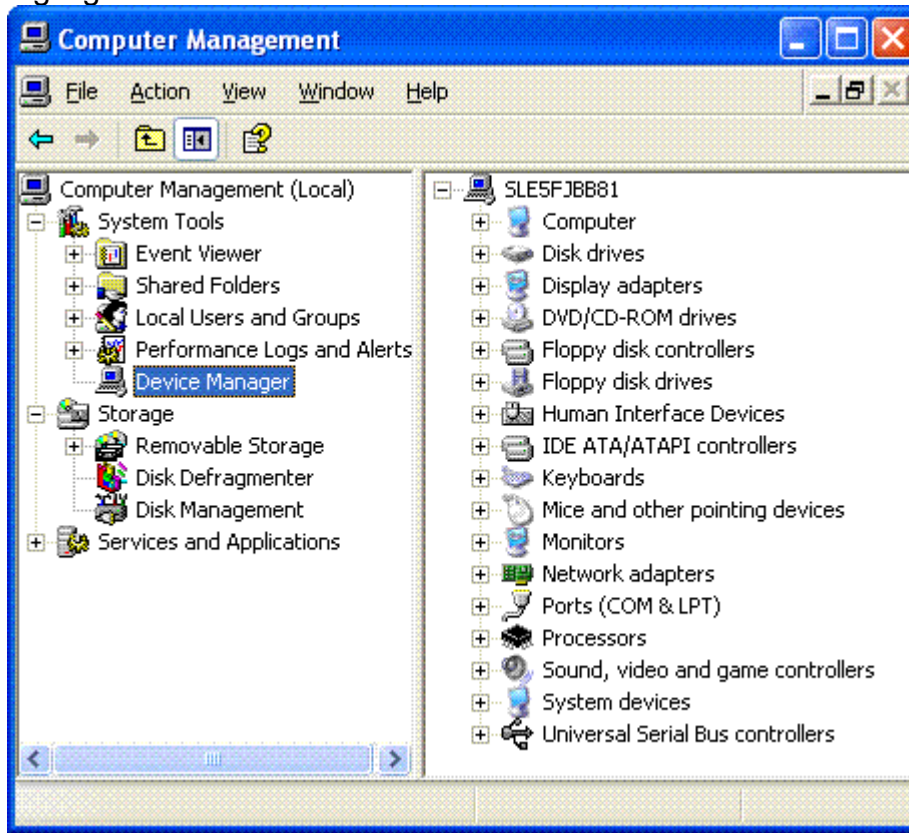
1. On your computer click the 'Start' button at the lower left.
2. On the Start menu that pops up find 'My Computer' and right click it.
If you don't see My Computer on the start menu look on your computer desktop



for **My Computer** right click it to get a menu, then click 'Manage' on the menu.



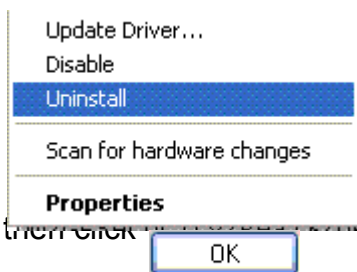
3. Highlight  Device Manager so that it looks the window looks like this



4. Click the + to the right of 'Ports', locate "CP210x USB to UART Bridge Controller" and right click it.

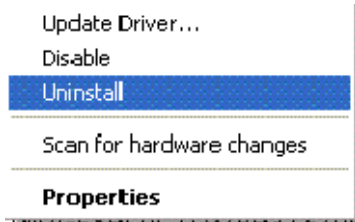
Á

5. Select



6. Click the + to the right of 'Universal Serial Bus Controller', locate "DisplayKEY USB Cradle" and right click it.

7. Select



then click

8. Disconnect both cables from the back of the cradle and disconnect the USB cable from the computer.
Please leave them disconnected at this time.

Close the Supra Icon

1. In the task bar, left of the Time & Date, locate the Supra Icon.
2. Click the Supra Icon with the right mouse button then click 'Exit' on the pop-up menu.

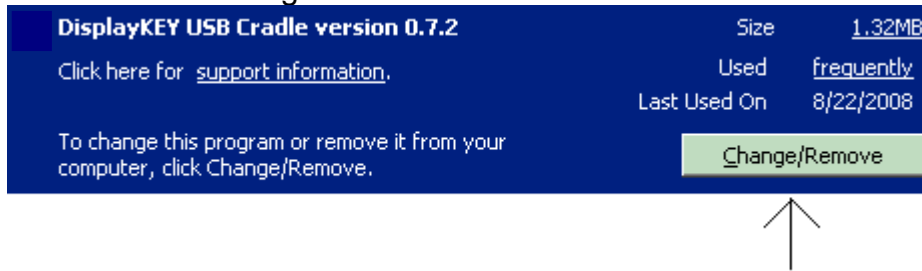
Uninstall USB Cradle Software

1. Click 'Start' then click Control Panel

[Can't find control panel?](#)

2. In the Control Panel screen click to open 'Add Remove Programs'
3. Locate and click DisplayKEY USB Cradle version 80.01

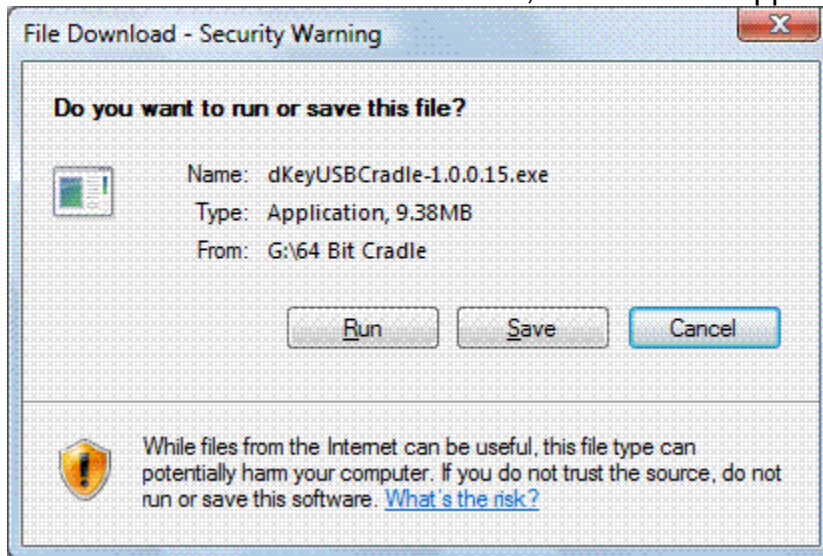
then click the 'Change Remove' button






4. Click 'Yes' or 'OK' to any windows asking if you want to uninstall programs, then click 'Yes' or 'OK' to reboot your computer.

Download and Install USB Cradle Software

1. Click [this link](#) to start the download
2. It's best to select "save" from the box, and save the application to your desktop



3. Download and Install USB Cradle Software

- If your Personal Firewall Software interferes with DisplayKEY software installation disable or close it during the installation.
- Go to [DisplayKEY Internet Security](#) for a list of DisplayKEY programs to add to your personal firewall software.
- On the left side of the KIM Web screen, click [Download Applications](#)
- Click  [DisplayKEY USB Cradle](#) , then click  and save the file to the desktop.
- When the download is complete, click  , then follow the on-screen installation prompts.
- When directed to attach the cradle's USB cable to the computer make sure to connect the USB cable to the back of your desktop computer or directly into your Laptop, for the strongest signal
- After the cradle is plugged into the computer, the 'Found New Hardware' window may appear. If you get 3 options to choose from select 'No, not this time' then click 'Next'. Select install 'Automatically 'Recommended' then click 'Next'.
- If you get a Windows Logo warning click 'Continue Anyway', then Click 'Finish'

If a second 'Found New Hardware' window appears, repeat the steps above.

- Follow the remaining installation steps on the screen to complete installation and update your DisplayKEY

