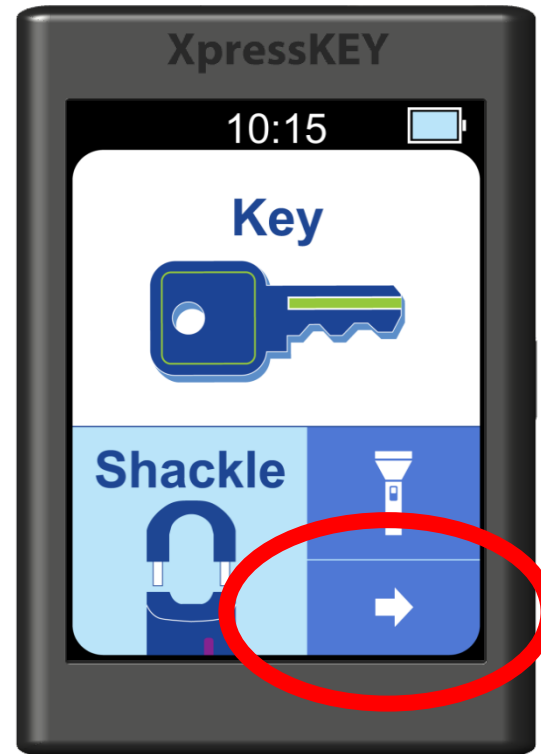


How to *Turn ON/OFF the Vibrate and Display Codes*

1. Tap the **arrow**.

XpressKEY®

1. Tap the **arrow**.
2. Tap **Preferences**.
3. Tap **Vibrate** or **Display PIN/Shackle**.
4. Tap **Done** to exit.

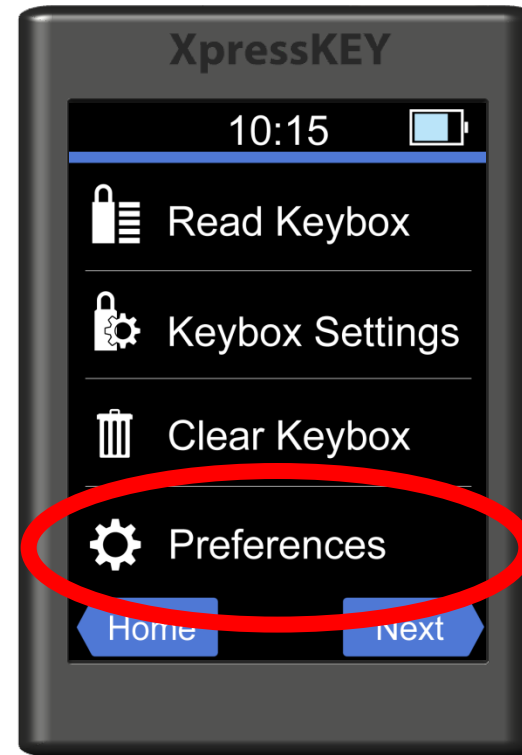


How to *Turn ON/OFF the Vibrate and Display Codes*

2. Tap **Preferences**.

XpressKEY

1. Tap the **arrow**.
2. Tap **Preferences**.
3. Tap **Vibrate** or **Display PIN/Shackle**.
4. Tap **Done** to exit.

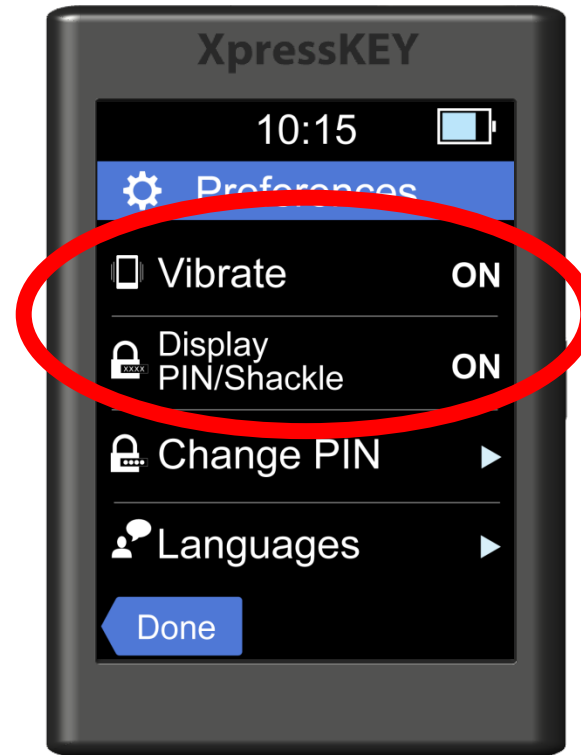


How to *Turn ON/OFF the Vibrate and Display Codes*

XpressKEY

1. Tap the **arrow**.
2. Tap **Preferences**.
3. Tap **Vibrate** or **Display PIN/Shackle**.
4. Tap **Done** to exit.

3. Tap **Vibrate** or **Display PIN/Shackle**.

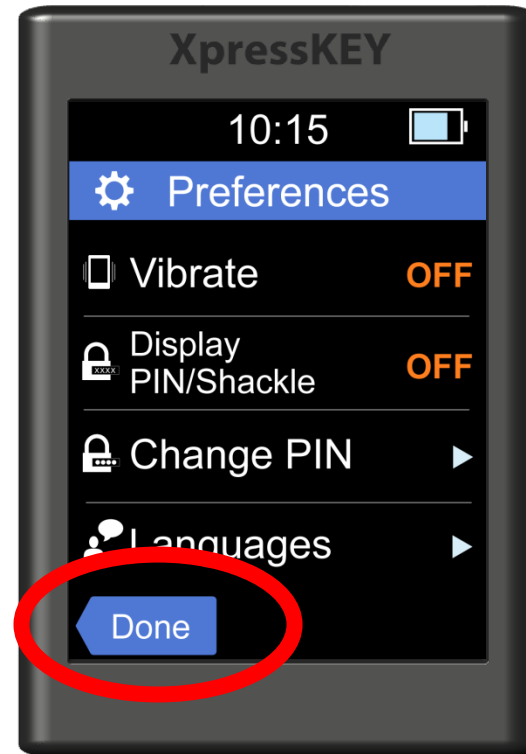


How to *Turn ON/OFF the Vibrate and Display Codes*

4. Tap **Done** to exit.

XpressKEY

1. Tap the **arrow**.
2. Tap **Preferences**.
3. Tap **Vibrate** or **Display PIN/Shackle**.
4. Tap **Done** to exit.



For the latest information, visit us at www.supraekey.com and select the **Customer Support** tab.



© 2016 United Technologies Corporation. All rights reserved. Supra is a part of UTC Climate, Controls & Security (CCS), and a unit of United Technologies Corporation. Supra and XpressKEY are registered trademarks of United Technologies Corporation. Other brand and product names are or may be the trademarks of, and are used to identify products or services of, their respective owners.

