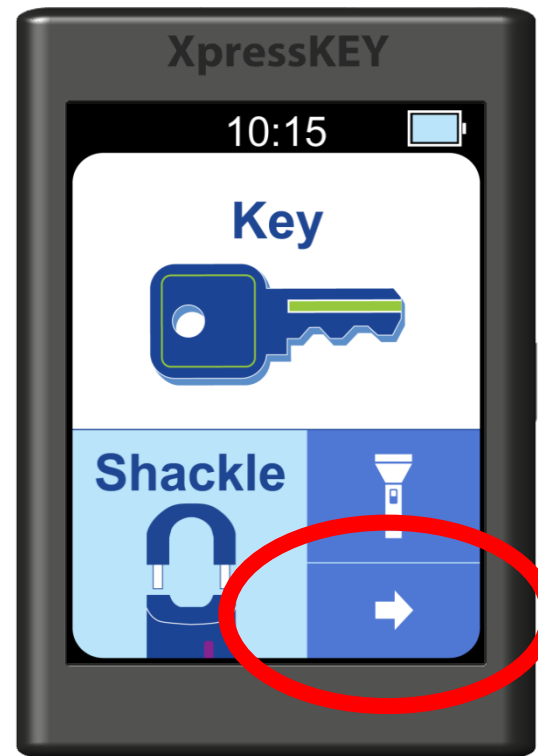


How to change *Keybox Settings*

XpressKEY®

1. Tap the **arrow**.
2. Tap **Keybox Settings**.
3. Tap on a selection and **Enter**.
4. Type in the shackle code and **Enter**.
5. Point the key at the keybox.
6. Tap **Done** to exit.

1. Tap the **arrow**.

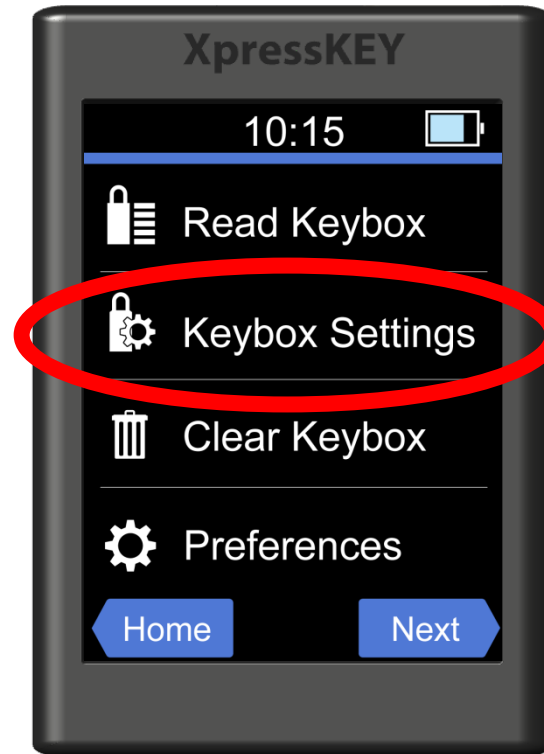


How to change *Keybox Settings*

XpressKEY

1. Tap the **arrow**.
2. Tap **Keybox Settings**.
3. Tap on a selection and **Enter**.
4. Type in the shackle code and **Enter**.
5. Point the key at the keybox.
6. Tap **Done** to exit.

2. Tap **Keybox Settings**.

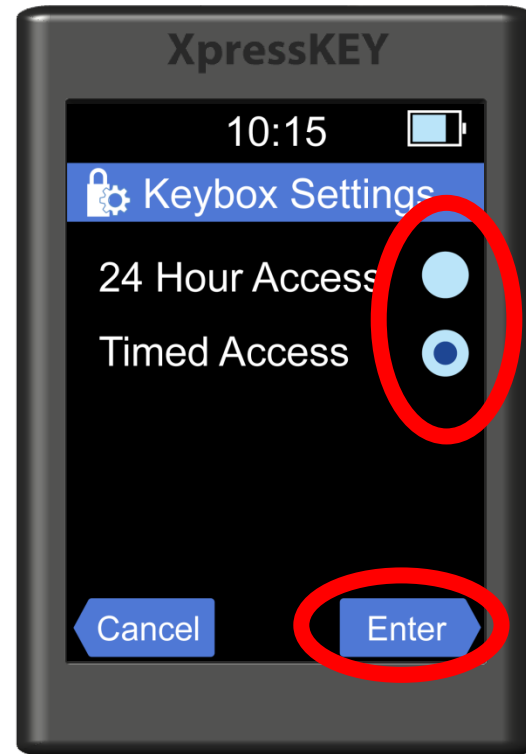


How to change *Keybox Settings*

3. Tap on a selection and **Enter**.

XpressKEY

1. Tap the **arrow**.
2. Tap **Keybox Settings**.
3. Tap on a selection and **Enter**.
4. Type in the shackle code and **Enter**.
5. Point the key at the keybox.
6. Tap **Done** to exit.



How to change *Keybox Settings*

XpressKEY

1. Tap the **arrow**.
2. Tap **Keybox Settings**.
3. Tap on a selection and **Enter**.
4. Type in the shackle code and **Enter**.
5. Point the key at the keybox.
6. Tap **Done** to exit.

4. Type in the shackle code and **Enter**.



How to change *Keybox Settings*

XpressKEY

1. Tap the **arrow**.
2. Tap **Keybox Settings**.
3. Tap on a selection and **Enter**.
4. Type in the shackle code and **Enter**.
5. Point the key at the keybox.
6. Tap **Done** to exit.

5. Point the key at the keybox.

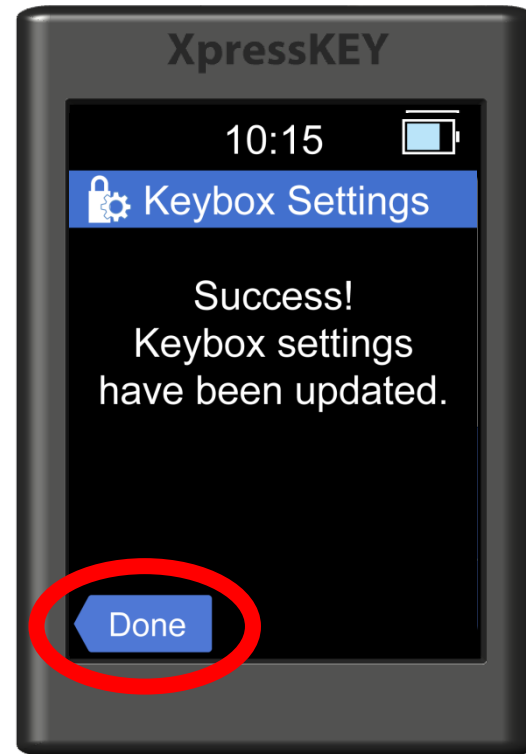


How to change *Keybox Settings*

6. Tap **Done** to exit.

XpressKEY

1. Tap the **arrow**.
2. Tap **Keybox Settings**.
3. Tap on a selection and **Enter**.
4. Type in the shackle code and **Enter**.
5. Point the key at the keybox.
6. Tap **Done** to exit.



For the latest information, visit us at www.supraekey.com and select the **Customer Support** tab.



© 2016 United Technologies Corporation. All rights reserved. Supra is a part of UTC Climate, Controls & Security (CCS), and a unit of United Technologies Corporation. Supra and XpressKEY are registered trademarks of United Technologies Corporation. Other brand and product names are or may be the trademarks of, and are used to identify products or services of, their respective owners.

