

How to *Obtain a Key*

1. Tap **Key**.

XpressKEY®

1. Tap the **Key** button.
2. Type in the PIN code and **Enter**.
3. Point the key at the keybox.
4. Press up on the key container.
5. Tap **Done** to exit.

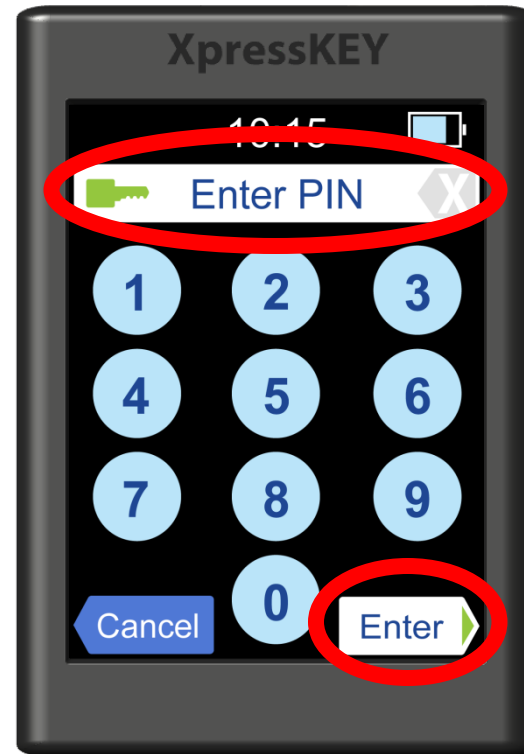


How to *Obtain a Key*

XpressKEY

1. Tap the **Key** button.
2. Type in the PIN code and **Enter**.
3. Point the key at the keybox.
4. Press up on the key container.
5. Tap **Done** to exit.

2. Type in the PIN code and **Enter**.

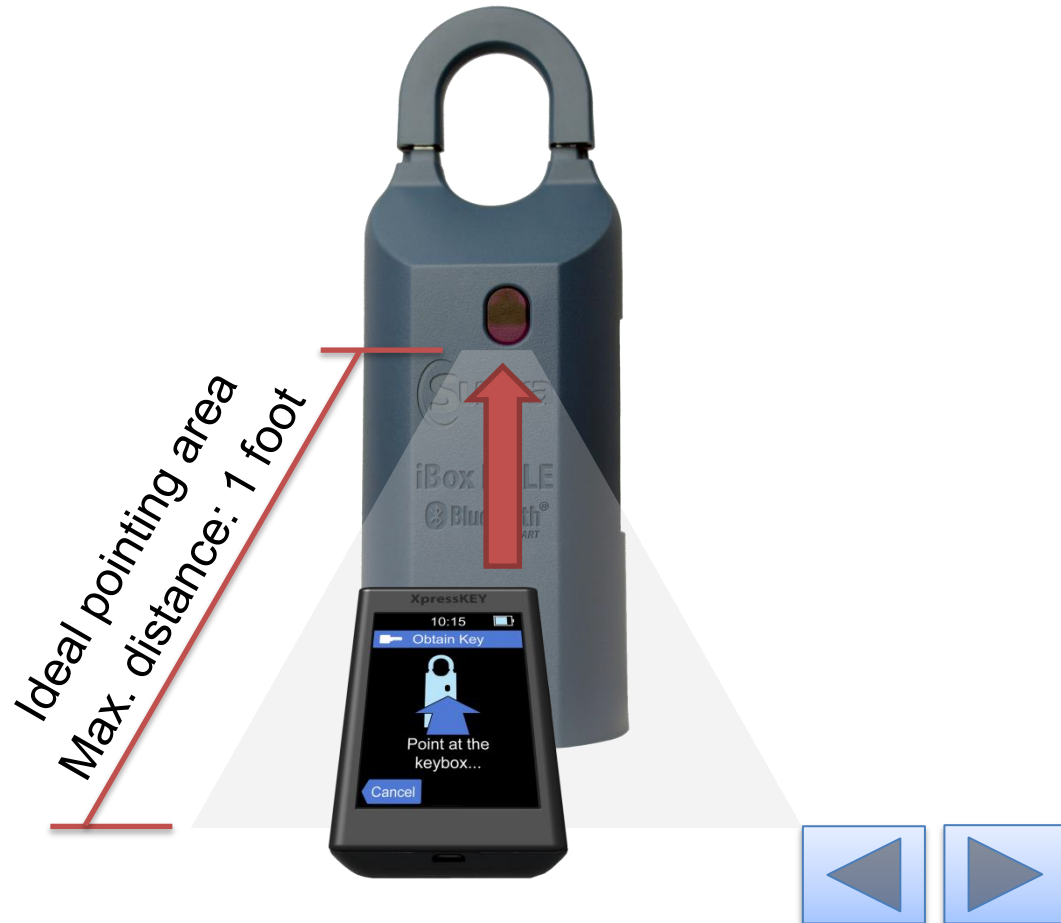


How to *Obtain a Key*

XpressKEY

1. Tap the **Key** button.
2. Type in the PIN code and **Enter**.
3. Point the key at the keybox.
4. Press up on the key container.
5. Tap **Done** to exit.

3. Point the key at the keybox.



How to *Obtain a Key*

XpressKEY

1. Tap the **Key** button.
2. Type in the PIN code and **Enter**.
3. Point the key at the keybox.
4. Press up on the key container.
5. Tap **Done** to exit.

4. Press up on the key container.

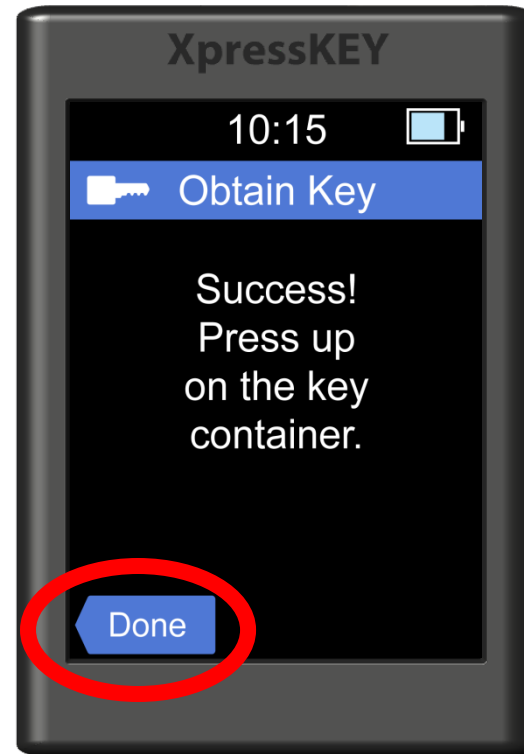


How to *Obtain a Key*

5. Tap **Done** to exit.

XpressKEY

1. Tap the **Key** button.
2. Type in the PIN code and **Enter**.
3. Point the key at the keybox.
4. Press up on the key container.
5. Tap **Done** to exit.



For the latest information, visit us at www.supraekey.com and select the **Customer Support** tab.



© 2016 United Technologies Corporation. All rights reserved. Supra is a part of UTC Climate, Controls & Security (CCS), and a unit of United Technologies Corporation. Supra and XpressKEY are registered trademarks of United Technologies Corporation. Other brand and product names are or may be the trademarks of, and are used to identify products or services of, their respective owners.

